

Proposed elevation 1

Existing shop front windows to be filled in with matching brickwork & detailing to match the first floor windows



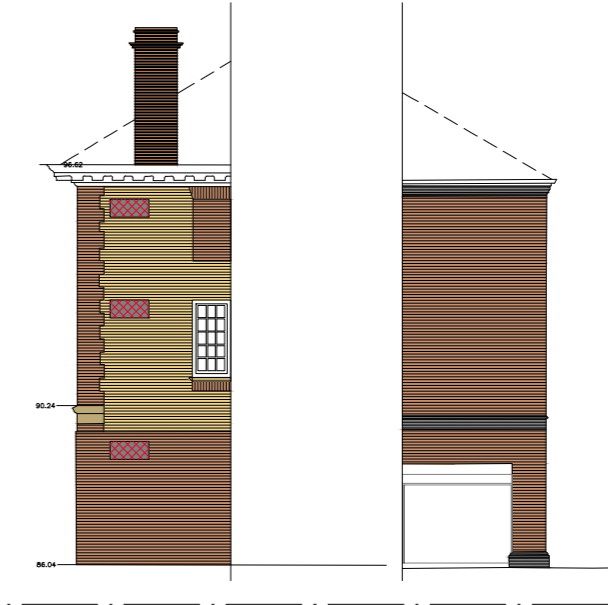
Proposed elevation 2



Proposed elevation 3



Proposed elevation 4



Proposed elevation 5

Proposed elevation 6

Ecologist to advise on appropriate positions for the bat access panels & bird boxes.

Generally, bat access panels should be sited at least four metres above ground level, ideally facing or close to areas of landscape planting or existing linear features. The access panels should not be positioned over windows or doorways where bat droppings may become a nuisance.

The installation of bird boxes is recommended at the development. Bird boxes will not be positioned over windows or doorways where droppings may become a nuisance. RSPB advice states that boxes should ideally be sited facing north to east, to avoid exposure to direct sunlight, which may cause overheating of chicks in the nest.

New potential extract / intake louvre position either in external wall or modified window - M&E consultant to confirm



REV	DATE	DESCRIPTION	##	##
DRN	CHK			
P1	2024-07-03	Initial issue		

CLIENT

The Leith Group

PROJECT TITLE

Lord Street, Wrexham
 16 Lord Street, Wrexham

TITLE

Existing plans

SUITABILITY

Work In Progress

DRAWN / CHECKED	INITIAL ISSUE DATE	SCALE
YQ/JL	07/2024	1:200 @ A2

DRAWING ID

Project	Originator	Volume	Level	Type	Role	Number	Status	Revision
1JD02	MHA	XX	XX	DR	A	02-000	S0	P1

